

HISTORY AND GEOGRAPHY: HELPFUL EASTERN EUROPE RESEARCH TOOLS

Amy L. Wachs, J.D.

Contact information: amygenealogy@outlook.com

Introduction

The accompanying presentation will demonstrate how knowledge of the geography and history of the region can help researchers tracing their roots in Eastern Europe. Maps and newspapers are helpful tools.

History and geography research resources

Historical maps. The historical map example below portrays Europe in 1815.



Map source: Perry-Castaneda Library Map Collection, University of Texas Libraries, retrieved electronically at http://www.lib.utexas.edu/maps/historical/europe1815_1905.jpg

Political maps. The following sample is a political map of Hungary.



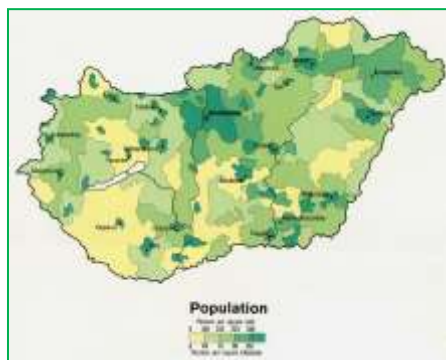
Map source: Perry-Castaneda Library Map Collection, University of Texas Libraries, retrieved electronically at <http://www.lib.utexas.edu/maps/europe/hungary.jpg>

Topographic maps. The below example is a topographic map of Central Europe:



Map source: Perry-Castaneda Library Map Collection, University of Texas Libraries, retrieved electronically at http://www.lib.utexas.edu/maps/ams/europe_2m/txu-pclmaps-oclc-6928028-central-europe-b2.jpg

Thematic maps. The example below represents the population density of Hungary.



Map source: Perry-Castaneda Library Map Collection, University of Texas Libraries, retrieved electronically at http://www.lib.utexas.edu/maps/europe/hungary_pop_1973.jpg

Cadastral maps. The following example is an 1852 cadastral map of a village in the Austrian Empire.



Map source: https://upload.wikimedia.org/wikipedia/commons/c/c9/Pielnia_1852.jpg

Rail transport maps. The following map example shows railways in areas of Hungary and Croatia in about 1900.



Map source: https://commons.wikimedia.org/wiki/Category:Rail_transport_maps_of_Austria-Hungary#/media/File:Railways_Croatia-Slavonia_and_Hungary.jpg

Historical maps, atlases, and gazetteers. Online resources include:

- <https://www.jewishgen.org/Communities/LocTown.asp> (JewishGen Gazetteer)
- <https://www.jewishgen.org/Communities/Search.asp> (JewishGen Communities Database)
- <https://maps.geshergalicia.org> (The Gesher Galicia Map Room)
- <https://www.litvaksig.org/research/map> (LitvakSIG Shtetl Map & List)
- <https://feefhs.org/map/library> (Foundation for East European Family History Studies Map Library)
- www.getty.edu/research/tools/vocabularies/tgn/index.html (Getty Thesaurus of Geographic Names Online)
- www.davidrumsey.com (The David Rumsey Map Collection)
- www.kartenmeister.com (Kartenmeister)
- <https://legacy.lib.utexas.edu/maps/> (Perry-Castaneda Library Map Collection at University of Texas Libraries)

Historical newspapers. Online resources include:

- <http://chroniclingamerica.loc.gov/> (Library of Congress Chronicling America)
- [About.proquest.com/en/products-services/pq-hist-news](http://about.proquest.com/en/products-services/pq-hist-news) (ProQuest Historical Newspapers)
- <https://news.google.com/newspapers> (Google Newspapers)
- <https://www.ancestry.com/search/categories/histnews/> (Ancestry.com Historical Newspapers Collection)
- www.theancestorhunt.com/newspaper-research-links.html (The Ancestor Hunt)
- <https://www.newspapers.com> (Newspapers.com)
- www.elephind.com (Elephind.com)
- www.cyndislist.com/newspapers (Cyndi's List)

The example below reports the Russian advance into Bulgaria in 1877 in the *New York Herald* (Friday, 29 June 1877 edition).



Source: *The New York Herald*. (New York [N.Y.], 29 June 1877. *Chronicling America: Historic American Newspapers*. Lib. of Congress. <<http://chroniclingamerica.loc.gov/lccn/sn83030313/1877-06-29/ed-1/seq-3/>>

“Brick walls” in Eastern European research

Brick walls are common in genealogical research, especially when researching Eastern European ancestry. It can be difficult to establish the connections between generations due to missing records. It is also easy to become lost or end up looking in the wrong place, as borders and names changed in the area. The accompanying program will present examples of brick wall situations where knowledge of history and geography helped resolve research challenges.

Note: The URLs listed above are current and verified as of 15 July 2021. The URL links are provided for informational purposes only and no warranties are made as to the accuracy or content of any external site or subsequent link.

© Copyright 2017-2021 Amy L. Wachs All rights reserved. Publication, copying, electronic transmission, or reproduction of any part of this material is not permitted without the author's advance express written permission.

© Copyright 2017-2021 Amy L. Wachs All Rights Reserved